

# Neurones

3 Types

- **Sensory** neurones – from a receptor (e.g. in a sense organ) to the central nervous system:



Sense organ

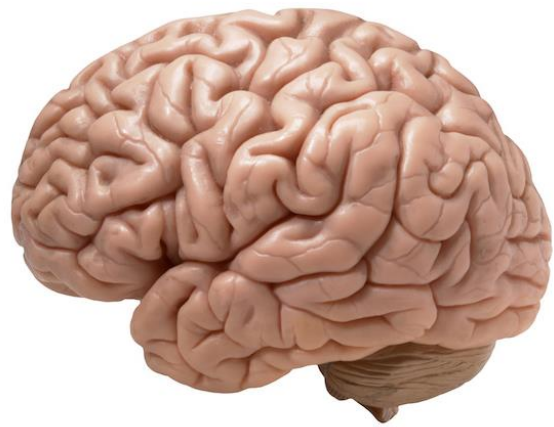
sensory neurone



Brain

How many sense organs can you think of?

- **Motor** neurones – from the central nervous system to an effector:



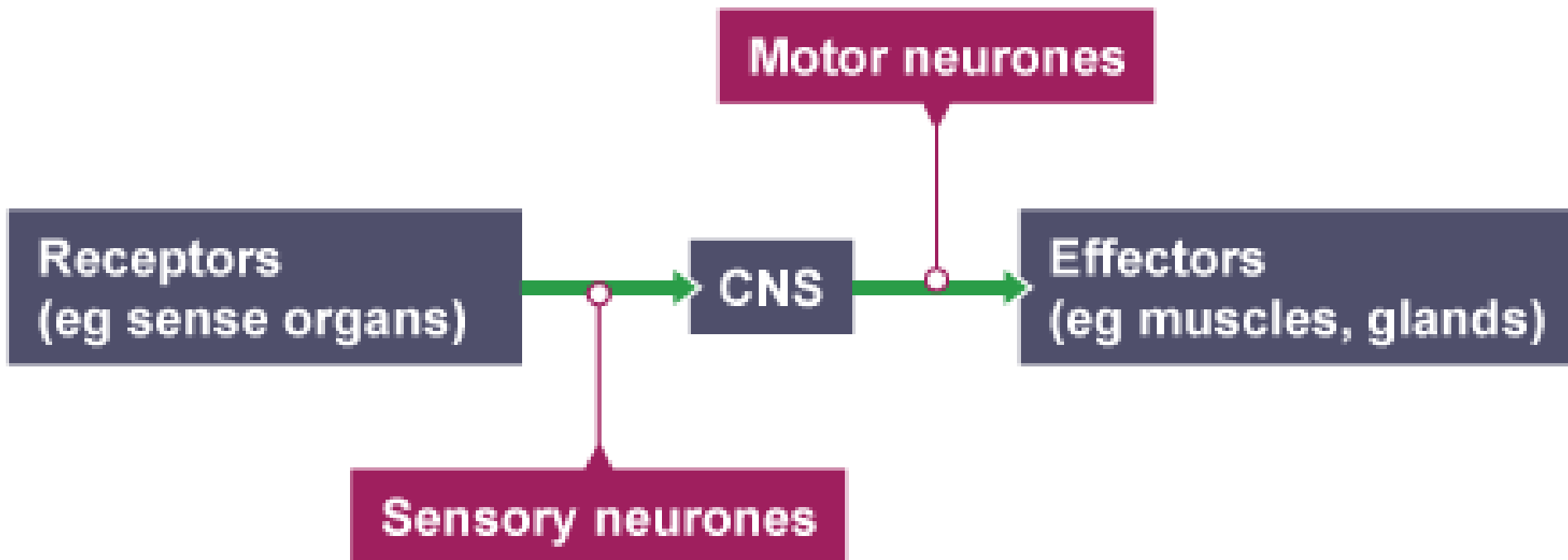
Brain

motor neurone



effector

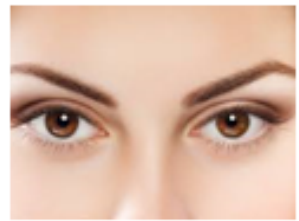
How many effectors can you think of?



- **Relay** neurones – from the sensory neurone to the motor neurone (when there isn't time to go to the brain and back!)




# So! Some paths look like this:




Sense organ

sensory neurone



Brain

motor neurone



effector

- Practical – looking at this pathway –

Measuring reaction times